

Precision Inserts for "Mold-In" Applications

MC Series

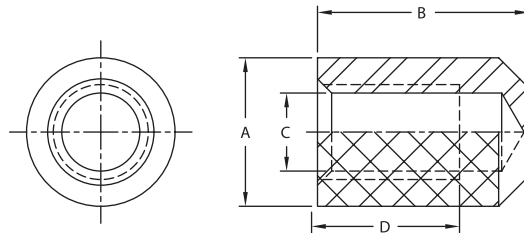


Precision Inserts for Closed-End "Mold-In" Applications

Our MC-Series insert is designed to be molded into Plastics, Rubber & Ceramics. The insert is designed with aggressive diamond knurling that provides high resistance to tensile pull and rotational torque loads. It has a closed bottom and a controlled minor diameter which provides for accurate positioning on core pins. The "closed-end" bottom prevents plastic flow into the threads.



MC Series



INCH		METRIC		A	B	C	C	D	D
Thread Size	Part Number	Thread Size	Part Number	±.005	+ .000" - .008"	(INCH) + .002"/- .000" after tapping	(METRIC) + .002"/- .000" after tapping	(INCH) Minimum number of full threads	(METRIC) Minimum number of full threads
2-56	256X187MC	M2.0 x 0.4	M20X187MC	.133	.187	.070	.064	5	5-1/2
4-40	440X250MC	M3.0 x 0.5	M30X250MC	.169	.250	.089	.100	5	7-1/2
6-32	632X312MC	M3.5 x 0.6	M35X312MC	.200	.312	.110	.117	5-1/2	7
8-32	832X344MC	M4.0 x 0.7	M40X344MC	.232	.344	.136	.133	6	6-1/2
10-24	1024X375MC	-	-	.266	.375	.154	-	4-1/2	-
10-32	1032X375MC	M5.0 x 0.8	M50X375MC	.266	.375	.161	.168	6-3/4	6-1/2
1/4-20	2520X562MC	M6.0 x 1.0	M60X562MC	.391	.562	.204	.200	6-1/2	8-1/2
1/4-28	2528X562MC†	-	-	.391	.562	.215	-	10	-
5/16-18	3118X656MC†	M8.0 x 1.25	M80X656MC†	.516	.656	.261**	.267**	6-3/4	7-1/2
3/8-16	3816X750MC†	M10.0 x 1.50	M100X750MC†	.578	.750	.318**	.337**	7	7
1/2-13	5013X937MC†	M12.0 x 1.75	M120X937MC†	.766	.937	.430**	.404**	6-1/2	7

Standard material is Brass, Alloy 360, per ASTM-B16. Additional thread sizes and other materials are available as a special order. Please contact our Sales or Engineering department for additional information and capabilities.

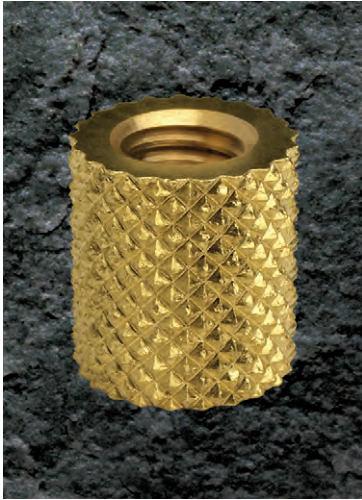
† Non-Stocking item. Minimum order may apply.

** I.D. Tolerance is +.003" /-.000" for this item.

MT Series

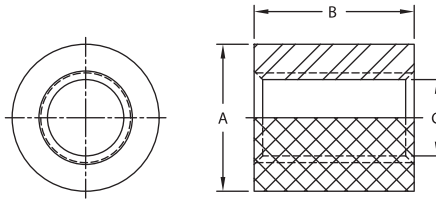


Precision Inserts for Thru-Thread "Mold-In" Applications



Our MT-Series insert is designed to be molded into Plastics, Rubber & Ceramics. The insert is designed with aggressive diamond knurling that provides high resistance to tensile pull and rotational torque loads. It also has a controlled minor diameter which provides for accurate positioning on core pins.

MT Series



INCH		METRIC		A	B	C	C
Thread Size	Part Number	Thread Size	Part Number	±.005	+ .000" - .008"	(INCH) + .002"/- .000" after tapping	(METRIC) + .002"/- .000" after tapping
2-56	256X156MT	M2.0 x 0.4	M20X156MT	.133	.156	.070	.064
4-40	440X187MT	M3.0 x 0.5	M30X187MT	.169	.187	.089	.100
6-32	632X250MT	M3.5 x 0.6	M35X250MT	.200	.250	.110	.117
8-32	832X281MT	M4.0 x 0.7	M40X281MT	.232	.281	.136	.133
10-24	1024X312MT	-	-	.266	.312	.154	-
10-32	1032X312MT	M5.0 x 0.8	M50X312MT	.266	.312	.161	.168
1/4-20	2520X468MT	M6.0 x 1.0	M60X468MT	.391	.468	.204	.200
1/4-28	2528X468MT†	-	-	.391	.468	.215	-
5/16-18	3118X562MT†	M8.0 x 1.25	M80X562MT†	.516	.562	.261**	.267**
3/8-16	3816X687MT†	M10.0 x 1.50	M100X687MT†	.578	.687	.318**	.337**
1/2-13	5013X875MT†	M12.0 x 1.75	M120X875MT†	.766	.875	.430**	.404**

Standard material is Brass, Alloy 360, per ASTM-B16. Additional thread sizes and other materials are available as a special order.

Please contact our Sales or Engineering department for additional information and capabilities.

† Non-Stocking item. Minimum order may apply. ** I.D. Tolerance is +.003" /-.000" for this item.



Tri-Star Industries, Inc. • 101 Massirio Drive, Berlin, CT 06037
 800-882-8980 • Phone: 860-828-7570 • Fax: 860-828-7475
 email: sales@tristar-inserts.com • www.tristar-inserts.com